



Recycle Right Mecklenburg County

Goal: To educate residents on how to put the RIGHT thing, in the RIGHT can, going to the RIGHT place!

Presented by Mecklenburg County's Recycling and Waste Reduction Educators

July 13, 2022

Mecklenburg County and Recycling Educators are proactive to work with those who may require information in an alternative format. Presentation materials are available in printed format and can be obtained by request from Mecklenburg County at SolidWaste@MeckNC.gov.

Requests for alternative formats must be requested at least 48 hours prior to presentation.

<https://bit.ly/MRFVideoEngl>

Video explaining the recycling journey from your home to materials being made into new products. See the machines and hand sorting process close-up at our recycling center!

YouTube

Search



MECKLENBURG COUNTY, NC
Solid Waste Management Program

0:02 / 4:07

2019 Recycling Right In Mecklenburg County

347 views • Nov 26, 2019

2 0 SHARE SAVE ...

 Mecklenburg County Government
608 subscribers

SUBSCRIBED

Recycling @ Materials Recovery Facility Operations 2019

Recycling Journey

1. Home:
Separate and
put in cart



2. City or Town:
Sends a truck to pick it up



3. MRF: Recycling Center
Materials dumped on floor



4. Sort: 400T/Day
Machines & people separate paper,
plastics, metals from **TRASH** (30T/hr.)



5. Baled:
Compacted by material



6. Sold & shipped to manufacturers



7. Used to make new products



Recycle Right?!

#1 Goal: Reduce 'contamination' in the recycling stream

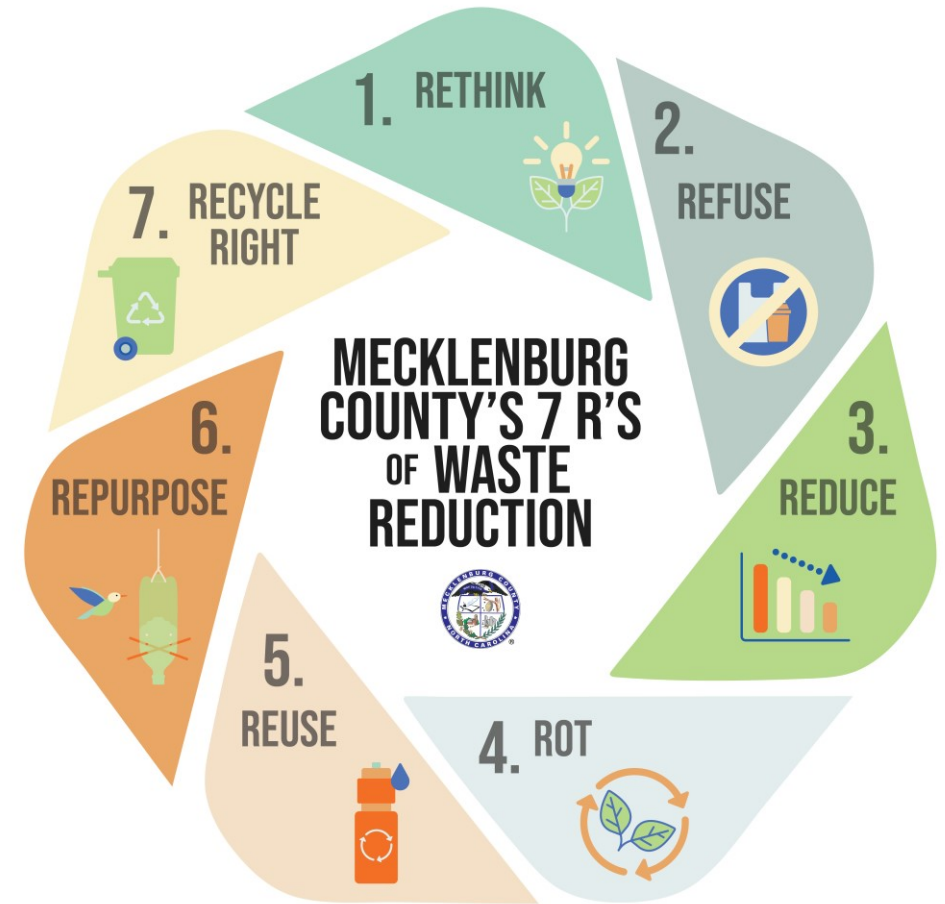
Recycle only what we can send to market:

1 in 5 items in curbside carts are
NOT recyclable!



3 R's EXPANDED to 7 R's...

Ask to be invited to the next 7 R's webinar:
Email: SolidWaste@MeckNC.gov



Are you a Wishful Recycler?

Wishful recyclers toss the wrong items into curbside recycling bins hoping they will be recycled.



Wishful recycling damages machinery, causes fires at recycling centers and ends up being sent to the landfill.

‘Wishful Recycling’ Costs Meck County

“If I put it in the recycling bin, someone will recycle it – right?”

The costs of improper recycling:

- 400 Tons per day x 15% rejects = **60 Tons of Trash per day to be sorted and hauled to landfill**
- 60 Tons x \$90/ton = \$5,400 processing fees + \$2,100 landfill fees = **\$7,500/day**
- \$7,500/day x 5 days/week = **\$37,500 week**
- \$37,500/week x 52 weeks/year equals = **\$1,950,000**

Non-Recyclable Contamination Costs: Over \$1.9 Million/year

WHAT'S THE ONE THING YOU CAN DO TO HELP US?:

“NO Plastic Bags in Curbside Carts”



The Plastic Bag Problem



Incoming load to the MRF –
how many bags do you see?

THIS WHERE THEY END UP...





Please **DO NOT** place the following items in your curbside recycling bin. **DO NOT** bag recyclables in plastic bags.

Anything
that can get
tangled in
machinery!

Rechargeable
batteries for
electronics



PROPANE TANKS



BATTERIES



FOOD



SHREDDED
PAPER



PLASTIC BAGS
AND TRASH



CORDS & HOSES



ROPES



DIAPERS



SCRAP METAL



PLASTIC CUPS &
PLASTICWARE



NAPKINS



PLASTIC FOOD
CONTAINERS



SPORTS BALLS



STUFFED ANIMALS



CLOTHING & SHOES



WIRE HANGERS



CAR PARTS



YOGURT CUPS



PUMP BOTTLES



ELECTRONICS



SHARPS



PLASTIC FILM &
BUBBLE WRAP

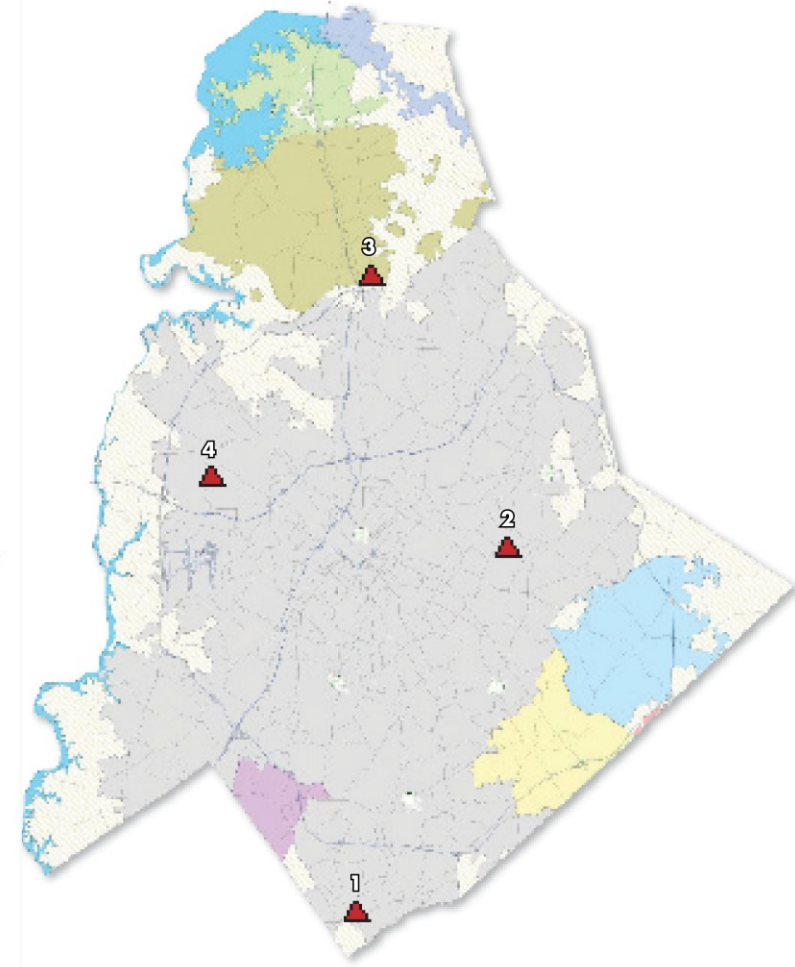
Sharp
items that
can cut
workers!

Flammables
like
propane
tanks or gas
cans

Many of the unaccepted items above can be taken to retailers, or any of the four Mecklenburg County Full Service Recycling Centers where they are recycled through separate systems.

Staffed, Full-Service Drop-off Centers

- ▲ 1. Foxhole Recycling Drop-off Center
17131 Lancaster Highway
- ▲ 2. Hickory Grove Recycling Drop-off Center
8007 Pence Road
- ▲ 3. N. Mecklenburg Recycling Drop-off Center
12300 N. Statesville Road
- ▲ 4. Compost Central Drop-off & Recycling Center
40 Valleydale Road



6 RECYCLABLE CATEGORIES



**PAPER &
MAGAZINES**



CARTONS



**CARDBOARD &
SMALL BOXES**
(Clean Pizza Boxes)



METAL CANS
(Empty)



**GLASS BOTTLES
& JARS**



**PLASTIC BOTTLES
& JUGS** with Necks

CLEAN

DRY

EMPTY

**IF it is not pictured
on this slide,
please do NOT put
it in your cart.**

RECYCLING RESOURCES EASY AS 1, 2, 3

Looking for City of Charlotte Trash/Recycling Information?

Remember, Mecklenburg County does not collect your residential trash or recycling.

[Missed City of Charlotte Collection](#)

[City of Charlotte Bulky Item Collection](#)

Quick Links

Residential	Commercial	Community
Self-Haul Trash/Recycling	Licensed Haulers	School Resources
Neighborhood Pick-Up	Rules and Regulations	Boards and Commissions
Household Hazardous Waste	Industry	Illegal Dumping
What Can I Recycle?	Business Hazardous Waste	Upcoming Events

More Information

Residential Disposal Fees for FY2021	Material Recycling Facility (MRF) Information
Commercial/Non-Resident Disposal Fees FY2021	Make a Payment
Paper Bags (Yard Waste Bags)	Videos & Cool Recycle Tools

Videos & Cool Recycle Tools



Mecklenburg County has many downloadable pieces of information available to you regarding recycling. You are welcome to download any of these documents for your use at home, work or school. We want to help educate everyone in Mecklenburg County's service area on "Recycling Right"!

[Brochures](#)

[Flyers](#)

[Mini Series](#)

[Pre-Recorded Presentations & Educational Videos](#)

[Recycling Commercials](#)

Recycling Articles

[Recycling: You're doing it Wrong](#)

Address

Office Location:

2145 Suttle Avenue
Charlotte, NC 28208

[MAP](#)

Hours: Disposal Site Hours Mon-Sat 7 a.m. - 4 p.m.

Contact

General Inquiries

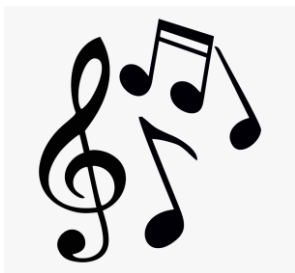
311 or 980-314-3867
[Send an Email](#)

1

WIPEOUTWASTE.COM

2

3



One of these things is not like the others...
One of these things just doesn't belong!

Which packing materials **SHOULD**
go into the recycling cart?





One of these things is not like the others...
One of these things just doesn't belong!

Which metal object **SHOULD**
go into the recycling cart?



Gutters





One of these things is not like the others...
One of these things just doesn't belong!



Which plastic object **SHOULD**
go into the recycling cart?





One of these things is not like the others...
One of these things just doesn't belong!

Which food container **SHOULD**
go into the recycling cart?



Frequently Asked Questions:



CLEAN, DRY, EMPTY



What can **YOU** do?


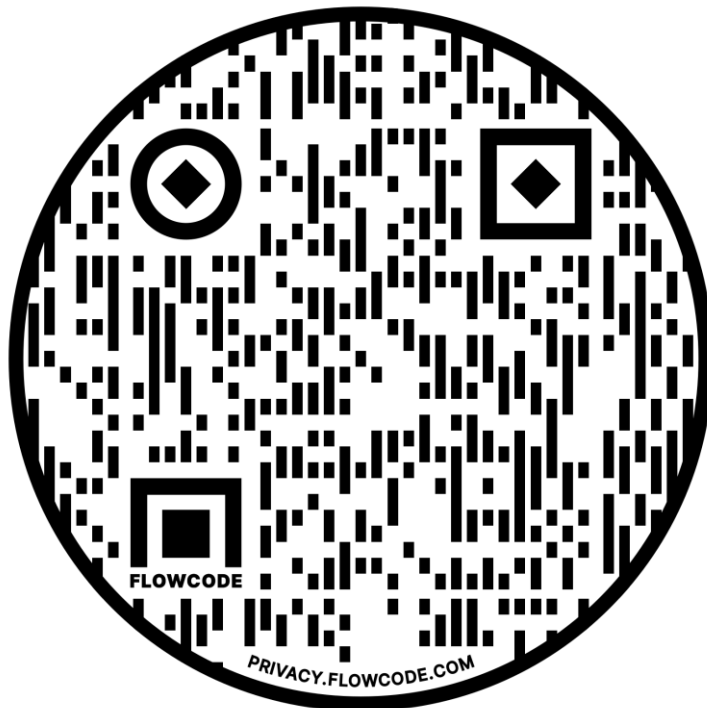
TYPE IN THE CHAT:

One thing you learned that
you **can & will commit** to
changing, starting today.




Please share this QR Code & link widely:


bit.ly/MeckRecycleRightVirtual



**Learn how to
RECYCLE RIGHT!**
AN E-LEARNING OPPORTUNITY



ADVANCED
REGISTRATION REQUIRED
bit.ly/MeckRecycleRightVirtual



Thank You & Remember to Recycle Right!



Mecklenburg County Solid Waste:

Phone: **311 or 980-314-3867 INFO LINE**

Email: **SolidWaste@MeckNC.gov**

Facebook: **Facebook.com/MeckCountyWasteReduction/**

Twitter: **twitter.com/wipeoutwastenow**

Website: **WipeOutWaste.com**

When in
doubt,
throw it out
OR
**GIVE US A
SHOUT!**



Any Questions?

We will answer!

